



Birches First School

Believe, Grow, Succeed



School Closure Home Learning

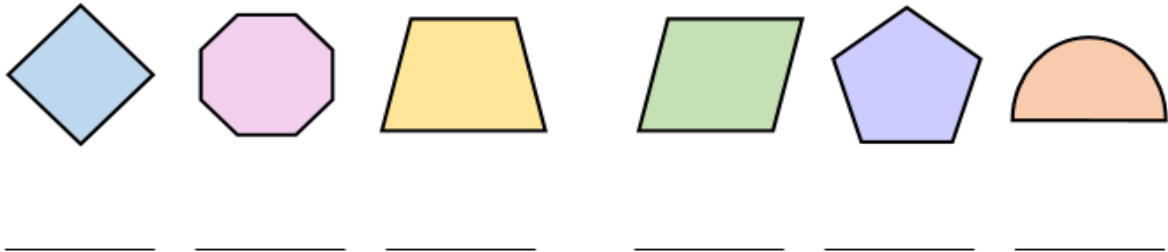
Year 3 Daily Tasks

Date: 12.6.20

Maths

1. Research and label the shapes.

Tip: Diamond is not an answer.



2. Use a ruler and draw the following shapes into your books.

Tip: A quadrilateral is a shape with 4 sides.

- A quadrilateral with no right angles.
- A quadrilateral with 1 line of symmetry.
- A rectangle where the length is double the width.
- A triangle with 2 acute angles.

3. Always, sometimes, never?

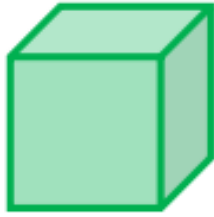
Explain your answer and draw shapes to prove it.

Remember to use a ruler.

Hexagons have no perpendicular lines.

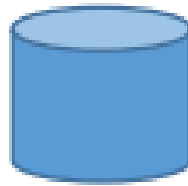
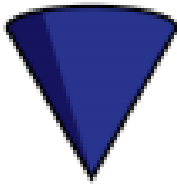
Octagons have 2 vertical and 2 horizontal lines.

4. Describe the shape



This shape is a _____.
It has _____ faces.
It has _____ edges.
It has _____ vertices.

5. What is the same and what is different about these two shapes?



6a. Mo has a 3-D shape, he says,



One face of my 3-D shape is a square.

What could Mo's shape be?

6b.

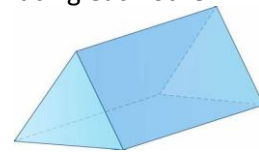
Alex says,



All 3-D shapes are prisms.

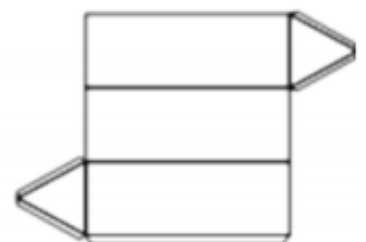
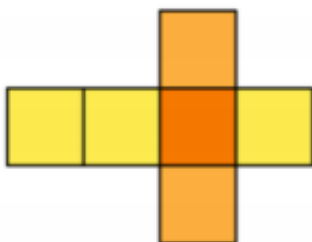
Do you agree with Alex?
Explain why.

A prism is a 3D shape with two identical shapes facing each other.



Bonus Challenge:

Cut out and stick these nets together. What shapes do you make?



English

Similar to last week's activity, the prefix 'dis' causes a word to have a negative meaning. For example, like becomes dislike

d	d	d	d	z	p	a	r	a	w	d	h
d	i	s	c	o	l	o	u	r	p	i	u
z	s	s	d	i	s	h	o	n	e	s	t
o	b	s	l	d	j	q	r	n	a	c	w
v	e	l	x	i	k	m	i	d	w	o	d
d	l	z	l	s	k	q	w	i	y	n	i
i	i	b	f	a	i	e	v	s	v	t	s
s	e	w	y	p	q	f	r	a	u	i	c
o	v	x	t	p	c	g	p	l	f	n	o
b	e	g	j	e	h	n	m	l	n	u	v
e	d	i	s	a	p	p	r	o	v	e	e
y	m	i	g	r	m	g	y	w	w	m	r

dislike

disobey

discolour

discover

disappear

dishonest

disallow

disbelieve

disapprove

discontinue

Choose 5 of the words from above and copy them into your books, taking care with your handwriting.

Reading

Pick the challenge(s) that you wish to complete.



Challenge 1: Use your imagination to answer the following questions.

- What does the fact that she is 'trudging' through the forest tell you about how she is feeling?
- What does 'lethargic' mean?
- Why would 'making the most of the remaining daylight' be crucial?
- Why are the trees compared to sentinels?
- What might happen in the forest when night falls? What is she so afraid of?
- Who might 'she' be?
- Have you ever been lost? What does it feel like?

Challenge 2: Can you draw 5 things you would like to have with you if you were lost in a forest in the middle of nowhere?

You could then explain why each item might be valuable

Challenge 3: Continue the story. Remember your expanded noun phrases, conjunctions and adverbials.

Hours and hours had passed, and she hadn't seen a soul. The monotony of trudging through this seemingly never-ending labyrinth was tiring, and her eyelids felt heavy. The heady scent of the pine sap and earthy moss added to her lethargic state. She felt as if she could close her eyes and sleep for a thousand years. She knew she couldn't though; being trapped in the woods when night fell wouldn't be a wise move. Making the most of the remaining daylight would be crucial, she knew.

A great sense of foreboding filled her, and she had a tight feeling in her chest. The trees around her, like sentinels protecting the gods of the forest, seemed to bear down upon her. The dense army of pine trees threatened her from every side. There was only one path forward, and she took it hesitantly, not knowing what awaited her in the distance...

Challenge 4: Can you add adverbs to my sentences below to make them better?

The girl was frightened. _____, she looked around at the surrounding forest. She began to walk _____ along the path, pausing _____ to take a sip of water from her canteen.

From the distance ahead, she heard a scream. The sound echoed _____ through the forest.

Challenge 5: Can you improve these sentences by adding detail, expanded noun phrases and conjunction?

- The girl was in a forest.
- It was a bit scary.
- The trees were big and tall she couldn't see much sky
- She started to walk along the path.