



Birches First School

Believe, Grow, Succeed



School Closure Home Learning

Year 1 Daily Tasks

Date: 23/04/20

English

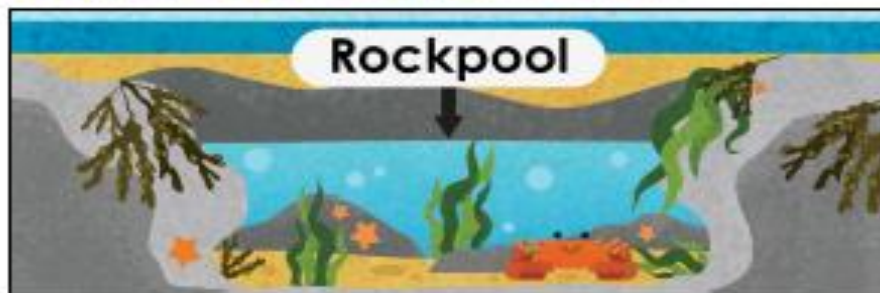
Reading

Read the text and answer the questions. Ask your grown-up to help you if you find it tricky.

Deepening Understanding

Y1 Information Text

Let's Look Inside a Rock Pool! by Hannah Raven



What are rock pools?

Rock pools are fascinating micro habitats. When the sea comes in it covers the rocks that are found on the beach. When the sea goes back out again the rocks are uncovered. Sometimes pools of water are created within groups of rocks. These are called rock pools. It is difficult for living things to survive in rock pools but some creatures can.

Q1

Why is it difficult for creatures to survive in rock pools?  
Circle one.

There are too many animals living there.

Rock pools change when the tide changes.

There is no food for them.

1 Mark



#### Bladderwrack Seaweed

*This is a common brown seaweed found in British rock pools. It looks like bubble wrap because it has circular air pockets. This is so the seaweed can float in water. Many creatures like to hide in it.*

#### Crabs

*Crabs have eight legs and two front legs with pincers on the end. They use their pincers to fight each other and to catch their food. Crabs can scuttle sideways very quickly. Their eyes are on tiny stalks on top of their heads. They can see behind and beside them.*

Q2

*What does bladderwrack seaweed look like?*

---

1 Mark

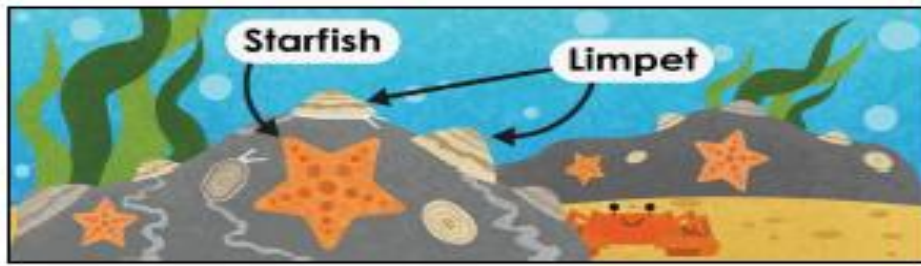
Q3

*List two things crabs use their pincers for.*

1) \_\_\_\_\_

2) \_\_\_\_\_

2 Marks



#### Starfish

Did you know starfish are not fish because they do not have a bone in their back? Starfish are slow movers. They have sucker pads on their arms, which means they can creep along the side of rocks.

#### Limpets

Limpets are cone shaped and can live for more than ten years. They can stick to rocks by using mucus. This protects them from predators and the sea. When the tide comes in, limpets can move around the rock pool.

Q4 Why are starfish not fish?

---

1 Mark

Q5 What shape are limpets?

---

1 Mark

Q6 What does the word 'predator' mean?

Tick one.

an animal that hunts

an animal that eats

an animal that hides

a sea animal

1 Mark

## Maths

*Always, Sometimes or Never?*

*There is only one way to fold a rectangle in half.*

Prove it!



## Challenges

*Always, Sometimes or Never?*

*Jerry says, "If I cut a shape in half, my two pieces are the same shape as the original."*



*Always, Sometimes or Never?*

*You can find half of 7.*

*Always, Sometimes or Never?*

*Millie states, "To find a  $\frac{1}{4}$  of a piece of string you fold it into 4 equal pieces."*



*Always, Sometimes or Never?*

*If I find half of a number, I get a bigger answer than if I find a quarter of the same number.*

Have fun!

Mrs Stubbs

