



Birches First School

Believe, Grow, Succeed



School Closure Home Learning

Year 1 Daily Tasks

Date: 20/04/20

Hello Year One! I hope you had a lovely Easter break and enjoyed eating lots of chocolate!

English

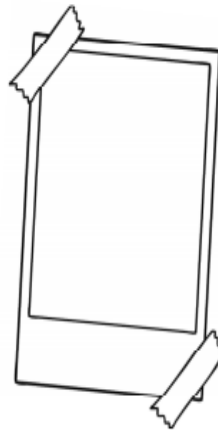
Use the writing frame below to write about one of your days at home over Easter. Draw pictures in the photo frames.

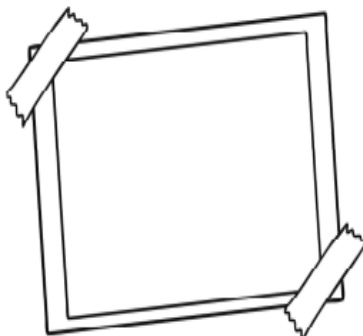
Remember to start your sentences with a capital letter, use clear finger spaces and a full stop at the end of each sentence.



Challenge

Use an exclamation mark (!)





SPAG

Work through each question with your grown up and circle the correct answer.

Deepening Understanding

Year 1 Punctuation - Always, Sometimes or Never?



Always, Sometimes or Never?

"Exclamation marks show when someone is surprised," says Jane.

Always, Sometimes or Never?

Capital letters are only used at the start of a sentence.

Always, Sometimes or Never?

Full stops come at the end of sentences.

Always, Sometimes or Never?

Millie says, "You always need an exclamation mark after a question."



Always, Sometimes or Never?

Days of the week do not start with a capital letter.

Always, Sometimes or Never?

When I end a sentence with a question mark, I need to use a full stop after it too.



Always, Sometimes or Never?

Alfie says, "I must remember to use finger spaces in my writing."

Always, Sometimes or Never?

Sentences begin with a capital letter.

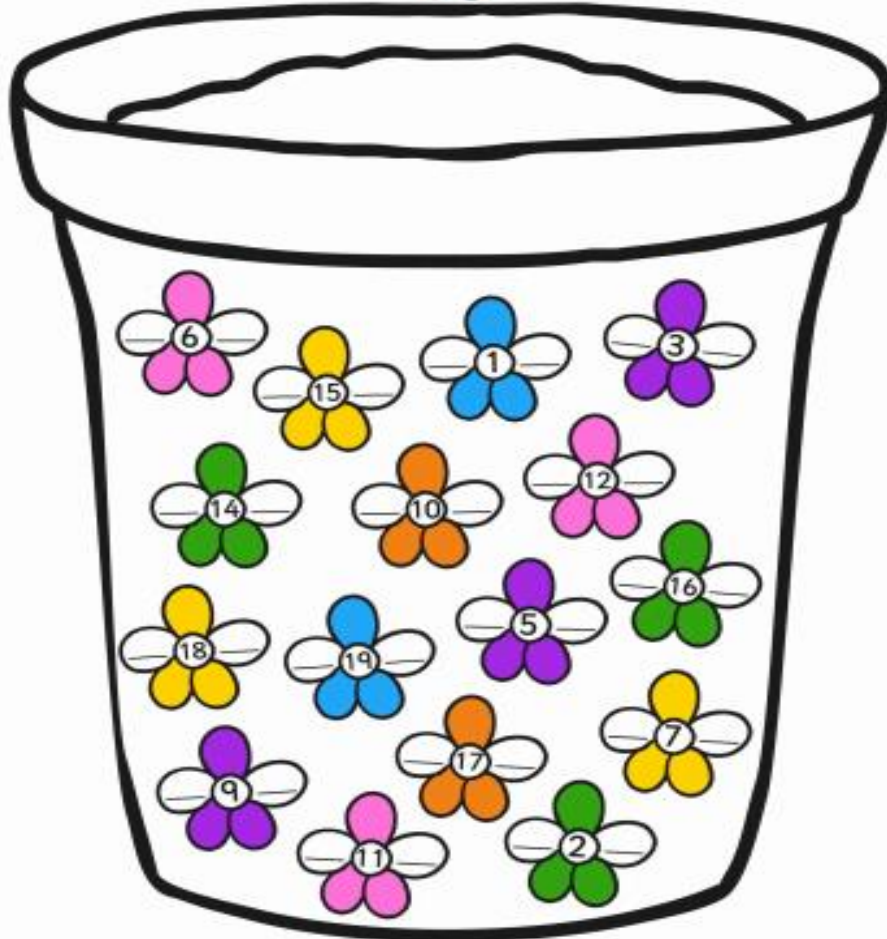
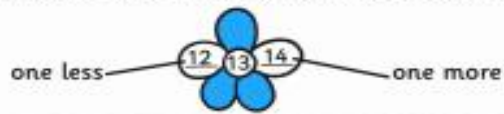


© Copyright Deepening Understanding LTD 2017

Photocopiable for educational purposes only

One More or One Less?

Write one more and one less than the numbers shown in the boxes.



Challenge

1 More or Less
Challenge Cards

1 More or Less Challenge Cards

1. Which number is 1 more than 45?

54 55 46

1 More or Less Challenge Cards

2. Which number is 1 less than 87?

86 88 78

1 More or Less Challenge Cards

3. Which number is 1 more than 19?

18 20 191

1 More or Less Challenge Cards
4. Which number is 1 less than 50?

51 59 49

1 More or Less Challenge Cards
5. Which number is 1 more than 35?

36 34 25

1 More or Less Challenge Cards
6. Which number is 1 less than 62?

52 61 53

1 More or Less Challenge Cards
7. Which number is 1 more than 74?

73 84 75

1 More or Less Challenge Cards
8. Which number is 1 less than 99?

89 98 97

1 More or Less Challenge Cards
9. Which number is 1 more than 67?

68 67 66

1 More or Less Challenge Cards
10. Which number is 1 less than 12?

13 11 2

1 More or Less Challenge Cards
11. Which number is 1 more than 80?

90 18 81

Have fun!

Mrs Stubbs

